



**REGIONAL SPECIALISED METEOROLOGICAL CENTRE-TROPICAL CYCLONES, NEW DELHI**  
**TROPICAL WEATHER OUTLOOK**

**DEMS-RSMC TROPICAL CYCLONES NEW DELHI DATED 10.03.2024**

**TROPICAL WEATHER OUTLOOK FOR NORTH INDIAN OCEAN (THE BAY OF BENGAL AND THE ARABIAN SEA) VALID FOR NEXT 168 HOURS ISSUED AT 0600 UTC OF 10.03.2024 BASED ON 0300 UTC OF 10.03.2024.**

**BAY OF BENGAL:**

**SCATTERED LOW AND MEDIUM CLOUDS WITH EMBEDDED MODERATE TO INTENSE CONVECTION LAY OVER SOUTHEAST BAY OF BENGAL AND ANDAMAN SEA.**

**\*PROBABILITY OF CYCLOGENESIS (FORMATION OF DEPRESSION) DURING NEXT 168 HRS:**

24 HOURS	24-48 HOURS	48-72 HOURS	72-96 HOURS	96-120 HOURS	120-144 HOURS	144-168 HOURS
NIL	NIL	NIL	NIL	NIL	NIL	NIL

**\* NOTE: EVERY 24HR FORECAST IS VALID UPTO 0300 UTC (0830 IST) OF NEXT DAY**

**ARABIAN SEA:**

**SCATTERED LOW AND MEDIUM CLOUDS WITH EMBEDDED WEAK TO MODERATE CONVECTION LAY OVER NORTH ARABIAN SEA.**

**\*PROBABILITY OF CYCLOGENESIS (FORMATION OF DEPRESSION) DURING NEXT 168 HRS:**

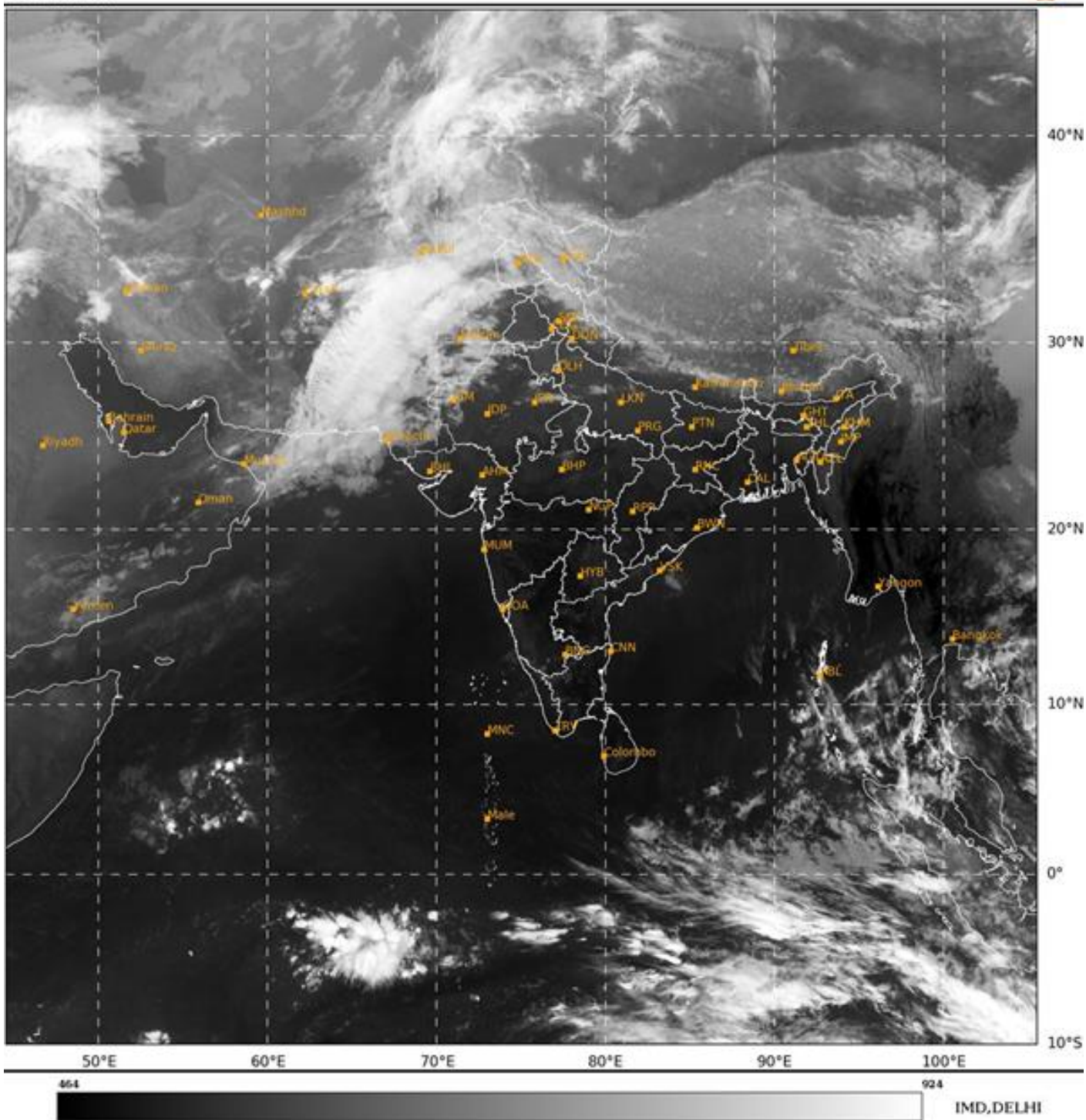
24 HOURS	24-48 HOURS	48-72 HOURS	72-96 HOURS	96-120 HOURS	120-144 HOURS	144-168 HOURS
NIL	NIL	NIL	NIL	NIL	NIL	NIL

**\* NOTE: EVERY 24HR FORECAST IS VALID UPTO 0300 UTC (0830 IST) OF NEXT DAY**

**REMARKS: NIL.**

SAT : INSAT-3D IMG  
 IMG\_TIR1 10.8 um  
 LIC Mercator

10-03-2024/(0300 to 0327) GMT  
 10-03-2024/(0830 to 0857) IST



Cloud distribution: (a) Isolated: <25%, Scattered:25-50%, Broken: 51-75%, Solid:>75%, Convection Intensity: (a) Weak: Cloud Top Temperature (CTT) >-25°C, (b) Moderate: CTT: - 25°C to -40°C, (c) Intense: CTT: - 41°C to -70°C and (d) Very Intense: : Less than -70°C  
 PROBABILITY OF CYCLOGENESIS (FORMATION OF DEPRESSION):NIL: 0%, LOW: 1-33%, , MODERATE: 34-66% AND HIGH: 67-100%  
 This is a guidance Bulletin for WMO/ESCAP Panel Member countries. Visit respective National websites for Country specific Bulletins